



AP275-200 Combination Flashing Light and Alarm Horn for Safety Stations

Application: Combination flashing light and alarm horn unit for safety stations. Flashing light activates and alarm horn sounds loudly when eyewash or shower is activated. Ideal for use in high traffic, industrial applications and areas with low ambient light.

Installation: Unit is designed for use with combination safety stations, and can be mounted on either the vertical pipe of the station or on a wall adjacent to the unit. 120 volt, 0.48 amp electrical supply is required.

Visual Signal: Weatherproof amber flashing light with shatter-resistant lens.

Audible Signal: Weatherproof horn delivers distinctive, urgent signal. Volume is preset at 100 db at 10 feet. An adjustment screw on the front of horn allows adjustment of output sound level.

Flow Switch: 1-1/4" IPS single pole, double throw waterproof flow switch for installation in water supply line to emergency unit. Switch senses flow of water when either the eyewash or shower is activated. Flow switch must be installed with tee fitting in horizontal position, flow switch body in vertical position and at least 6" from closest fitting. Direction of flow is marked on switch body.

Mounting: Furnished complete with bracket for mounting on vertical pipe or wall, junction box and 5 foot flexible NEMA 4X cord and receptacle. Electrical connection by others.

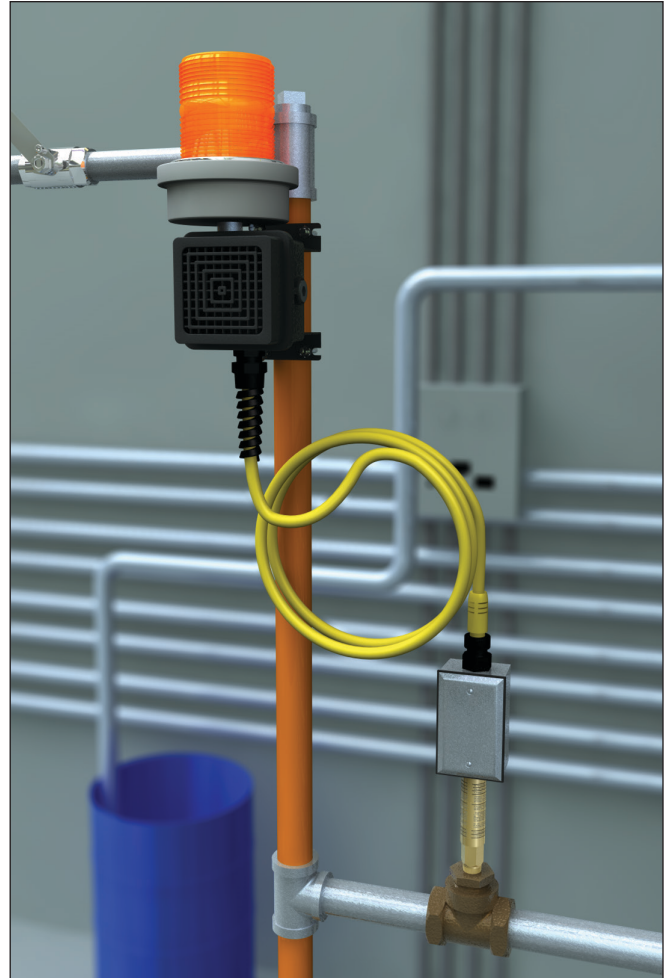
Quality Assurance: Unit is fully assembled, wired and factory tested prior to shipment.

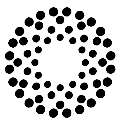
Available Options

- HV** High Voltage. Unit is designed for 208-240VAC at 50/60 Hz.
- SW** Silencing switch for alarm horn.

Additional Model

- AP275-205** Same as above except with double pole, double throw flow switch for connection to monitoring system. When emergency unit is actuated, light and horn activate and electrical signal is sent to remote monitoring location.





Guardian

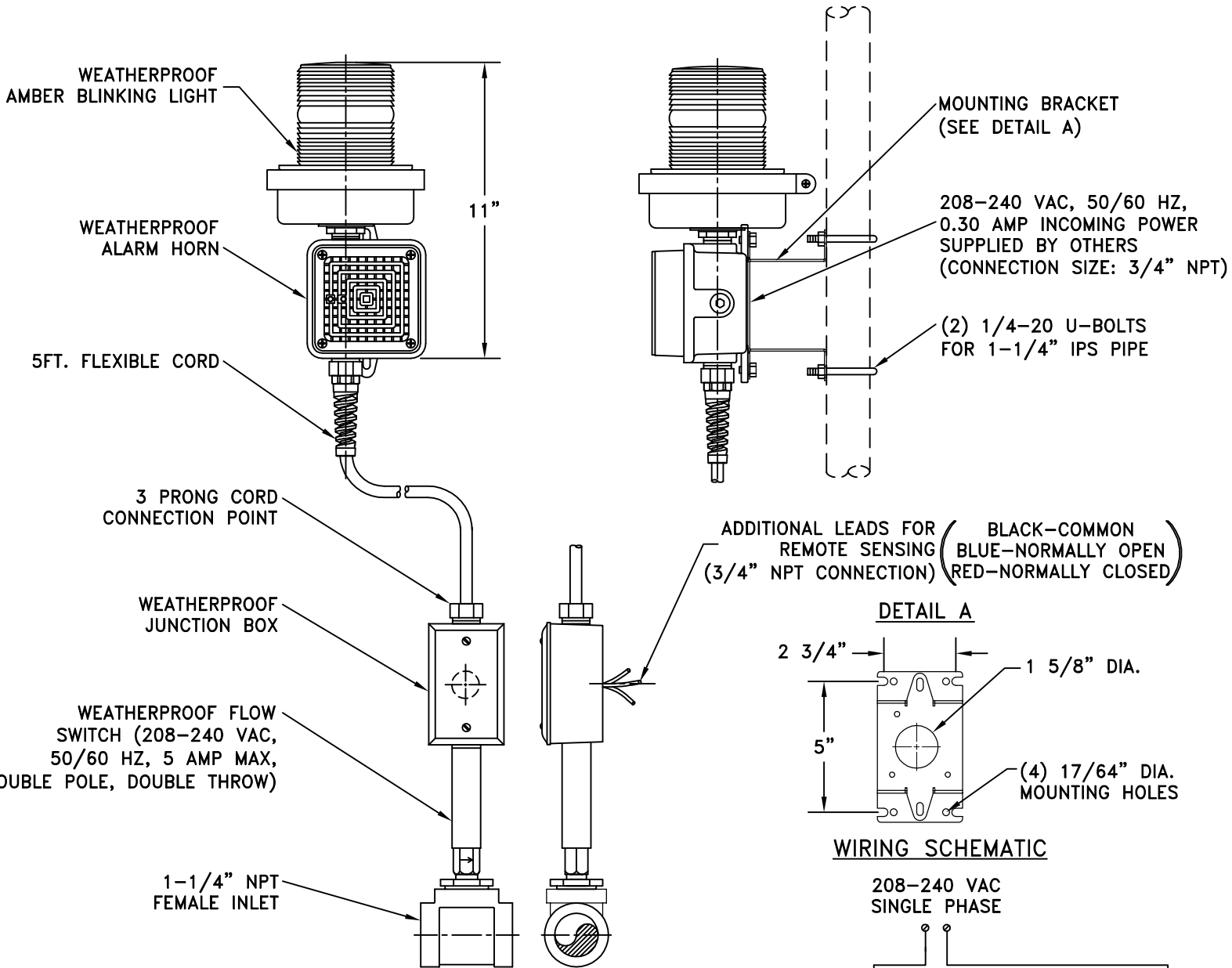
EMERGENCY EYEWASH & SHOWER TECHNOLOGY

Guardian Equipment
1140 N North Branch St
Chicago, IL 60642

312 447 8100 TELEPHONE
312 447 8101 FACSIMILE
gesafety.com

AP275-205HV

COMBINATION BLINKING LIGHT AND ALARM HORN WITH WEATHERPROOF FLOW SWITCH ASSEMBLY AND REMOTE SENSING, 208-240 VAC POWER



NOTES:

1. FLOW SWITCH IS DESIGNED TO ACTIVATE AT 2.4 GPM AND DEACTIVATE AT 2.0 GPM.
2. FLOW SWITCH MUST BE INSTALLED VERTICALLY IN A HORIZONTAL PIPE RUN, UPSTREAM OF UNIT AND AT LEAST 6" FROM FITTING.
3. SOUND OUTPUT ON HORN IS ADJUSTABLE FROM 0 db TO 100 db AT 10 FEET.

UNITS (EXCEPT THOSE WITH SELF-CLOSING VALVES) COMPLY WITH THE REQUIREMENTS OF ANSI Z358.1.

TEST ALL EMERGENCY EQUIPMENT AT LEAST WEEKLY.

Drawing Number: G901-207

Approved: _____

Revision Number: 100213-SCK