

PROVEN

Applications

FOR LIQUID WASTE MITIGATION

SpillFix®



Dalton International Limited
Unit 6, 23 Ash Road
Wiri, Auckland, 2104
www.spillfix.co.nz | 0800 323 223

SPILLFIX APPLICATIONS

Applications where SpillFix has been successfully used for spill and liquid waste mitigation.

| | | | | | |
|------------------------------------------------------------------------------------------|------------------------------------------------------------------------------|-----------------------------------------------------------------------------------|---------------------------------------------------------------------|------------------------------------------------------------------------------------------------|------------------------------------------------------------------------------------------------|
| A Acetaldehyde Acetic Acid Acetic Anhydride Acetone | Acrylic Paint Aluminum Hydroxide Ammonium Hydroxide | Antifreeze Aviation Fuel Automotive Fluids | B Barium Hydroxide BBQ Sauce Battery Acid Bleach | Blood Bodily Fluids Boric Acid Brake Fluid | C Calcium Hydroxide Calcium Hypochlorite Car Wax Carbon Black Castor Oil |
| C Chlorine Water Chloroform Citric Acid Clorox (Full Strength Bleach) | Coolant Corn Oil Cottonseed Oil Cresol | D Dairy Products Degreasers Detergents Drilling Fluids | E Enamel Paint Ethylene Glycol Ethylenediamine | F Fabric Softeners Ferric Chloride Floor Wax Formic Acid | Fruit Juice Fuel Oil |
| G Glycerol Gorilla Glue Grape Juice | H Hydraulic Fluid Hydrocarbon Fluids Hydrochloric Acid (45%) | Hypochlorite Solution (18%) Hydrogen Peroxide (70%) | I Ice Cream Italian Dressing | J Juice | K Ketchup |
| L Latex Paint Laundry Detergent Linseed Oil | Liquid Polymers Lubricating Oil | M Magnesium Hydroxide Milk Mineral Oil Motor Oil | N Nitric Acid Nutella Spread | O Octane Oil Oil Paint | Olive Oil Orange Juice |
| P Paint Paint Thinners Paraffin Peracetic Acid (15%) | Peroxide (70%) Petroleum Ether Phenol Phosphoric Acid | Polymers Potassium Hydroxide (45%) Power Steering Fluid Propylene Glycol | Q | R Ranch Dressing Resins | |
| S Salad Dressing Sauce Silicone Oil Softeners Sodium Bicarbonate | Sodium Bisulfite Sodium Chloride Sodium Hydroxide Solvents | Soup Soy Bean Oil Soy Milk Spray Paint | Sucrose Sulfuric Acid (50%) Synthetic Motor Oil Syrup | T Tomato Sauce Tannic Acid Transformer Oil Transmission Fluid Turpentine | |
| U Urine | | V | W Water Wine Wood Stain | | |
| X Xylene | | Y | Z | | |

USED BY:

INDUSTRIES

| | | GENERAL CATEGORIES | | | | | | | | | | | | | | | | | | | | | | |
|---------------------------------|-------------------------------------|--------------------|-------------------------|----------|----------------------|-----------|-----------------------------|-----------|------------------|--------------|-------------|-----|-------|--------------------|----------------|----------------------|-------------------|---------------|-------|----------------|-----------|----------------|------------------------|---|
| | | Hydrocarbons | Hydrocarbon Tanks/Drums | Coolants | Machining Lubricants | Chemicals | Plastic / Polymers / Resins | Adhesives | Humidity Control | Dust Control | Floor Sweep | Fat | Paint | Food Liquid Spills | Vegetable Oils | Maintenance Clean Up | Fleet Maintenance | Hydraulic Oil | Acids | Solidification | Spill Kit | Trash Leachate | Coatings / Galvanizing | |
| Automotive | Distribution | ● | | | | | | | | | | | | | | | | | | | | | | |
| | Component Production | ● | | | | | ● | | | | | | ● | | | ● | | ● | | | | | | |
| | Tire Production | ● | | ● | | ● | | | | | | | | | | | | | | | | | | |
| | Disassembly | ● | | ● | | | | | | | | | | | | | | | | | | | | |
| | Brake Manufacturing | ● | | | | | | | | | | | | | | | | | | | | | | |
| | Assembly | ● | | | | | ● | | | | | | ● | | | | | | | | | | | |
| Manufacturing | Maintenance/Service | ● | | ● | | | | ● | | | | | | | | | | | | | | | | |
| | Body Shops | ● | | ● | | | | | | | | | | | | | | | | | | | | |
| | Bearing | ● | ● | ● | | ● | | | | | | | ● | | | | | | | | | | | |
| | Plastic | ● | | | | | ● | | | | | | | | | | | | | | | | | |
| | Polymers | ● | | | | | | | | | | | | | | | | | | | | | | |
| | Cement | ● | | | | | | | | | | | | | | | | | | | | | | |
| Processing | Cement Products | ● | | | | | | | | | | | | | | | | | | | | | | |
| | Brick | ● | | | | | | | | | | | | | | | | | | | | | | |
| | Glass | ● | | | | | | | | | | | | | | | | | | | | | | |
| | Grain | ● | | | | | | | | | | | | | | | | | | | | | | |
| | Vegetable Oil | ● | | | | | | | | | | | | | | | | | | | | | | |
| | Processed Food | ● | | | | | | | | | | ● | | | ● | | | | | | | | | |
| Transportation | Truck | ● | | ● | | | | | | | | | | | | | | | | | | | | |
| | Airport | ● | | ● | | | | | | | | | | | | | | | | | | | | |
| | Transfer Stations | ● | | | | | | | | | | | | | | | | | | | | | | |
| | Ports | ● | | ● | | | | | | | | ● | | | | | | | | | | | | |
| | Boats | ● | | ● | | | | | | | | | | | | | | | | | | | | |
| | Shipyards | ● | | ● | | | | | | | | | | | | | | | | | | | | |
| Production | Rail | ● | | | | | | | | | | | | | | | | | | | | | | |
| | Aluminium | ● | | | | | | | | | | | | | | | | | | | | | | |
| | Steel | ● | | | | | | | | | | | | | | | | | | | | | | |
| | Copper Pipe | ● | | | | | | | | | | | | | | | | | | | | | | |
| | Wire | ● | | | | | | | | | | | | | | | | | | | | | | |
| | Oil Up Stream | ● | | ● | | | | | | | | | | | | | | | | | | | | |
| Maintenance | Oil Down Stream | ● | | ● | | | | | | | | | | | | | | | | | | | | |
| | Heavy Truck | ● | | ● | | | | | | | | | | | | | | | | | | | | |
| | Heavy Equipment | ● | | ● | | | | | | | | | | | | | | | | | | | | |
| | Municipal Fleets | ● | | ● | | | | | | | | | | ● | | | | | | | | ● | | ● |
| | Municipal Waste Water | ● | | | | | | | | | | | | | | | | | | | | | | |
| | Fire/Rescue Dept | ● | | | | | | | | | | | | | | | | | | | | | | |
| Collection | Hazardous Waste | ● | | ● | | ● | | | | | | | | ● | ● | ● | ● | ● | ● | ● | ● | ● | ● | ● |
| | Waste / Trash | ● | | ● | | | | | | | | | | | | | | | | | | ● | ● | ● |
| | Companies / Fleets | ● | | ● | | | | | | | | | | | | | | | | | | | | |
| | Transformers | ● | | | | | | | | | | | | | | | | | | | | | | |
| | Poultry / Pork / Beef | ● | | | | | | | | | | ● | | | | | | | | | | | | |
| | Distribution Centers | ● | | | | | | | | | | | | | | | | | | | | | | |
| Chemical Plants | Bottling Plants | ● | | | | | | | | | | | | | | | | | | | | | | |
| | Warehouse Operations | ● | | | | | | | | | | | | | | | | | | | | | | |
| | Machining and Milling | ● | | | | | | | | | | | | | | | | | | | | | | |
| | Foundries | ● | ● | | | | | | | | | | | | | | | | | | | | | |
| | Quarries | ● | | | | | | | | | | | | | | | | | | | | | | |
| | Ashphalt | ● | | | | | | | | | | | | | | | | | | | | | | |
| Coatings and Galvanizing | Environmental Hazmat Spill Clean up | ● | | ● | | ● | | ● | | | | | | ● | ● | ● | ● | ● | ● | ● | ● | ● | ● | ● |
| | Educational Institutions | ● | | | | | | | | | | | | | | | | | | | | | | |

These Organizations & Companies

- BMW Plant SC • LKQ Heavy Truck
- Jtech • Donghee • Kongsberg
- Michelin • YH Automotive
- LKQ
- New York Brake
- BMW
- Atlantic Brake & Tire • Jiffy Lube • Valvoline • Just Brakes
- Caliber Collision
- Jtech • Timken • Sona
- Bright Plastics • Thyssenkrupp
- Henkel • Duraflex • American Water • GDLS
- LaFarge • Cemex • RediMix • Lehigh Concrete
- Shelly Company • Lehigh Concrete • Oldcastle
- Harbison Walker • Hanson Brick
- Libbey Glass
- ADM
- Ventura Foods • ADM
- Nestle/Purina • Pepsi
- Capital Volvo
- Atlantic Aviation • BWI Airport
- Salvage • Cargill • Wallover
- Charleston
- Nautiq
- Ingles
- Amtrak • Progressive Rail • DC Streetcar
- Aleris Int'l • Constellium
- ArcelorMittal • Timken
- Barnhardt
- South Wire
- Houghton • East Coast Drilling • D Now (on seller)
- D Now (on seller)
- Barnhardt
- ALL Crane • East Coast Drilling
- Penn DOT • City of Auburn • SC DOT • GA DOT
- American Water • AL DOT • MS DOT • FL DOT
- PA Dept. Conservation & Natural Resources • Auburn Fire Dept.
- Clean Harbors • Northridge • Hepaco
- Waste Management • Waste Industries • Waste Pro • Advanced Disposal
- Scrubgrass Power Plant • Gulf Power
-
- Tyson • Browns Meat Packing
- FedEx • Sysco
- Arizona Chemicals
- Ventura Foods
- Sysco • Fedex • Walmart DC • Tractor Supply DC
- Jtech • Elgin Fastener Group
- Golden's
- Martin Marietta • Vulcan • Sloan
- Erie Blacktop • APCA
- AZZ Galvanizing
- Reliability Services • Northridge • Hepaco
- NC State • UMass • Auburn University • UVA • WVU

BENEFITING THE TRIPLE BOTTOM LINE

PEOPLE

Mined clay based absorbents pose a health risk from carcinogenic abrasive dust and the slippery slicks they leave behind.



V



SpillFix absorbs on contact and cleans to a touch dry, slick free surface.

Health risk reduced by **99%**

Man hours to clean up a spill with kitty litter.



V



SpillFix absorbs on contact so there is no waiting around.

Clean up time is reduced by **80%**

4 pallets of 40lb bags of kitty litter.



V



Is replaced by 1 pallet of 20lb bags of SpillFix. No heavy lifting

Absorbent handling weight is reduced by **87%**

PLANET

Annual deliveries of kitty litter absorbent.



V



Deliveries of SpillFix will be far less per annum.

Absorbent deliveries are reduced by **75%**

Annual haulage of kitty litter waste.



V



SpillFix will create far less waste.

Waste haulage volume is reduced by **75%**

Annual disposal of kitty litter waste.



V



SpillFix will create far less waste that in many situations may be incinerated.

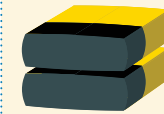
Waste disposal weight is reduced by **66%**

PROFIT

Bags of kitty litter absorbent required annually.



V



Bags of SpillFix absorbent required annually for the same leaks and spills.

Product purchasing is reduced by **75%**

Space required for storing kitty litter absorbent.



V



Inventory storage is far less with SpillFix.

Storage space is reduced by **75%**

Annually a number of kitty litter bags are dropped and rupture – Most have a non return policy.



V



SpillFix robust bags do not rupture when dropped.

Spoilage is eliminated by **99%**

AT A GLANCE COMPARISON CHART



John Smith of SpillFix (left) receiving the Occupational Health & Safety Magazine's Product of the Year Award.



Michael Dean of SpillFix (right) receiving the NAE 250 Award for innovation.



| | SpillFix | Perlite | Clay |
|-------------------------------------------|----------|---------|------|
| Non Carcinogenic | ✓ | ✓ | ✗ |
| Dust free | ✓ | ✗ | ✗ |
| Safe for all spills | ✓ | ✗ | ✗ |
| OMRI Organic Use Listing | ✓ | ✗ | ✗ |
| Biodegradable | ✓ | ✗ | ✗ |
| Non abrasive | ✓ | ✗ | ✗ |
| Absorbs paint | ✓ | ✓ | ✗ |
| Absorbs on contact | ✓ | ✓ | ✗ |
| Approved for non-hazardous landfill | ✓ | ✗ | ✗ |
| Safety Award winning product | ✓ | ✗ | ✗ |
| Pet and child safe | ✓ | ✗ | ✗ |
| Re-usable on multiple spills | ✓ | ✗ | ✗ |
| NSF Listing – Certified safe around food* | ✓ | ✗ | ✗ |
| Preference for oil over water | ✓ | ✗ | ✗ |
| Suitable for all domestic use | ✓ | ✗ | ✗ |
| Cartonized shelf-stockable packaging | ✓ | ✗ | ✗ |
| Resealable dispensing container | ✓ | ✗ | ✗ |
| Environmentally responsible life-cycle | ✓ | ✗ | ✗ |
| Small carbon footprint | ✓ | ✗ | ✗ |
| Lightweight robust packaging | ✓ | ✗ | ✗ |
| Can be used to clean hands and tools | ✓ | ✗ | ✗ |
| Has 100% customer approval | ✓ | ✗ | ✗ |

PRODUCT INFORMATION

Product Range



| | |
|-------------|--------------|
| SKU: | RDSPL3L |
| Size: | 3Q JAR |
| Per Pallet: | 288 |
| Per Carton: | 6 |
| Absorbs: | +/- 2 QUARTS |



| | |
|-------------------------------------------|-----------------|
| SKU: | SPLCW-4GB |
| Size: | 4 GAL (7lbs*) |
| Per Pallet: | 48 |
| * Net when packed. May vary with humidity | |
| Absorbs: | +/- 2.1 GALLONS |



| | |
|-------------------------------------------|----------------------|
| SKU: | SPL-15L |
| Size: | 0.6ft x 15ft (7lbs*) |
| Per Pallet: | 124 |
| * Net when packed. May vary with humidity | |
| Absorbs: | +/- 2.1 GALLONS |



| | |
|-------------------------------------------|---------------------------|
| SKU: | SPL-50L |
| Size: | 2.0ft x 50ft (20lbs*) BAG |
| Per Pallet: | 48 |
| * Net when packed. May vary with humidity | |
| Absorbs: | +/- 7 GALLONS |



| | |
|-------------|-----------------|
| SKU: | SPLB-1.5M |
| Size: | 5ft BOOM |
| Per Pallet: | 192 |
| Per Carton: | 4 |
| Absorbs: | +/- 1.5 GALLONS |



| | |
|-------------|---------------|
| SKU: | SPLB-3.0M |
| Size: | 10ft BOOM |
| Per Pallet: | 96 |
| Per Carton: | 2 |
| Absorbs: | +/- 3 GALLONS |



| | |
|-------------|-----------------|
| SKU: | SPLK-175B |
| Item: | SpillKit |
| Per Pallet: | 60 |
| Per Carton: | 2 |
| Absorbs: | +/- 3.6 GALLONS |



| | |
|-------------|-----------------|
| SKU: | SPLK-2J5B |
| Item: | SpillKit |
| Per Pallet: | 60 |
| Per Carton: | 2 |
| Absorbs: | +/- 2.5 GALLONS |

Get Started Pallet

The SpillFix "Get Started Pallet" Offer affords facilities an opportunity to begin using SpillFix and to establish which SpillFix products serve them best. This pallet contains:

- Twelve SpillFix 2.0ft³ (20lb) bags
- Twelve SpillFix 0.6ft³ (7lb) bags
- Twenty four SpillFix 3 quart shaker jars
- Eight SpillFix 10ft boom socks
- Sixteen SpillFix 5ft boom socks

Speak to your representative about getting a SpillFix "Get Started Pallet" into your facilities where absorbents are needed.

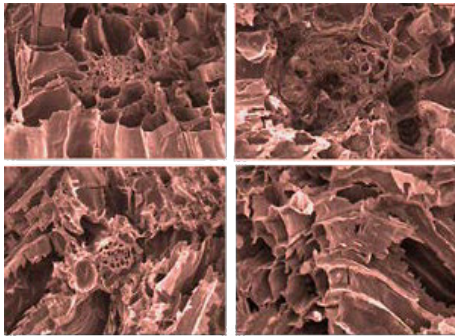


SpillFix SpillKits



- Durable dustpan and broom
- One pair of safety glasses
- Two absorbent pads
- One lightweight 4 Gallon/15 litre bag of SpillFix organic industrial absorbent. This kit contains enough dust-free granular absorbent to absorb 2.1 gallons of spill liquid (Also available with 2x 3qt jars)
- Contents stored securely and dry with easy double clip access
- One 5 foot/1.5 meter (4"/10cm diameter) SpillFix Boom SOC to mitigate spill migration. The world's best performing SOC with the capacity to absorb 6 quarts of spill liquid
- Disposable protective gloves
- Heavy duty plastic trash bags
- This compact kit is made from tough, water resistant 1000 Denier military grade nylon. Measuring only 18" x 18" x 6" it can go anywhere it is needed, as it weighs in at only 10.5 lbs
- Easy carry straps and 2 mounting D hooks on the back of the bag

SAFE, ALL NATURAL, SUSTAINABLE



SpillFix material (image magnification X350)^a

SPILLFIX ENVIRONMENTAL LIFE-CYCLE



SpillFix - created from a waste stream to reduce hazardous waste going to USA landfills.

SpillFix is completely safe to handle, around pets, for the environment, and on floors and equipment. It is dust free and non-abrasive.

SpillFix is formulated from premium coir. Coir (also known as coir fibre pith) is free of any chemicals and toxins. It is a sustainable produce from a coconut husks.

SpillFix has a unique, highly absorbent porous structure unlike anything else. Each particle resembles a small sponge with an astounding natural structure that creates an incredible surface area. An area estimated to be 244,000 ft² per gallon unit volume.

This makes SpillFix at least four times more absorbent than any other industrial absorbent.

Though light-weight, SpillFix is dust free, providing a far safer clean up process that eliminates any waiting around and the intolerable carcinogenic dust from being tracked all over a work site.

In many situations SpillFix can easily be applied to a spill from a standing

position. This, combined with its light-weight alleviates any possibility of back injury.

| ABSORBENT | ABSORBENCY | |
|------------------|------------|--------|
| | MASS | VOLUME |
| SpillFix (Coir) | 295% | 67% |
| Diatomite (Clay) | 40% | 27% |

SpillFix absorbs it all to a touch dry, slick free surface and has an OMRI organic use certification and a NSF food safe classification.

SpillFix is a highly stable absorbent that is suitable for use in a tremendously wide range of hazardous and non-hazardous liquid spill applications. SpillFix Industrial Organic Absorbent is classified as a not readily combustible solid material.^b



a. See Degradation of Hydrocarbon Waste & Material Information.
 b. See Safety Data Sheet and BTU Analysis & Flammability Report. Reports are available from www.spillfix.co.nz

Dalton International Limited
Unit 6, 23 Ash Road
Wiri, Auckland, 2104
www.spillfix.co.nz | 0800 323 223

SpillFix[®]